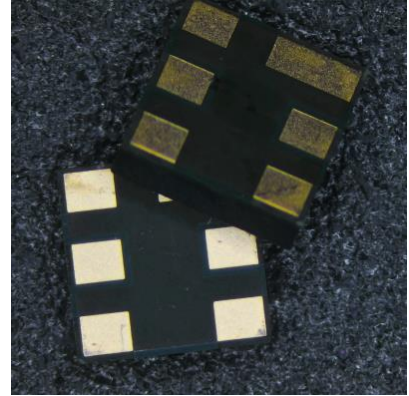


## Features

---

- For 2492MHz BeiDou S Band application
- FBAR (Film Bulk Acoustic Resonator) technology
- High rejection
- Plastic Chip Scale Package ( CSP )
  - ✓ Standard size : 3.0mm\*3.0mm\*0.7mm



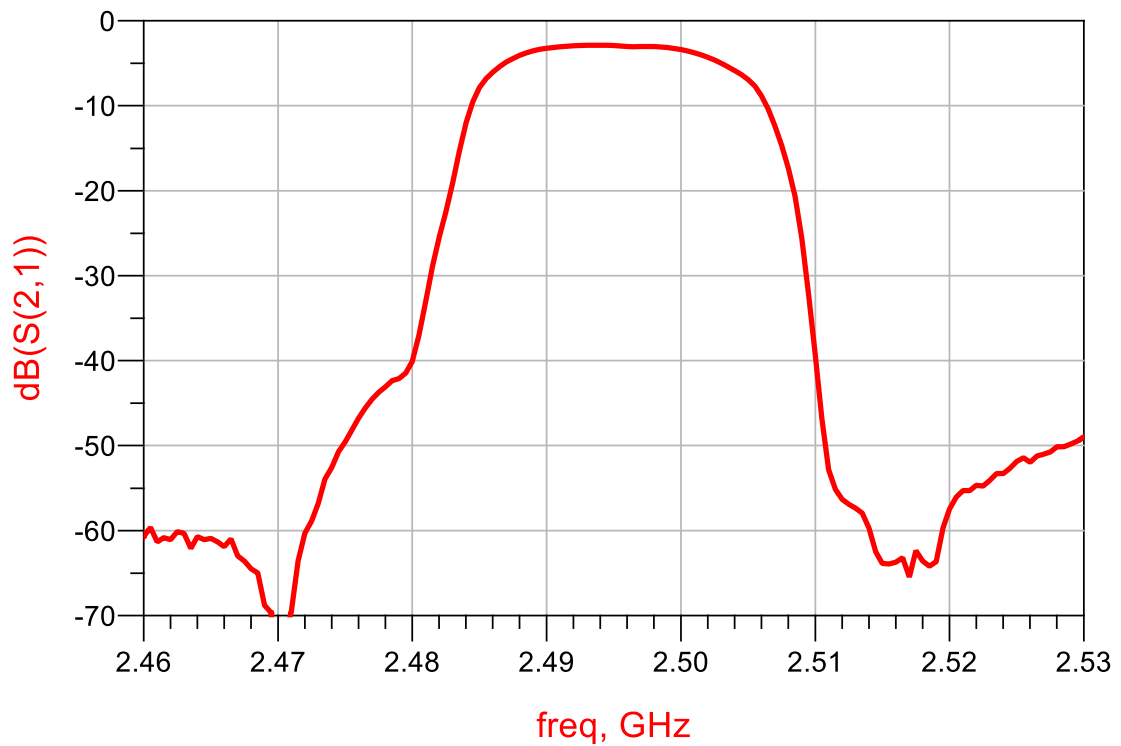
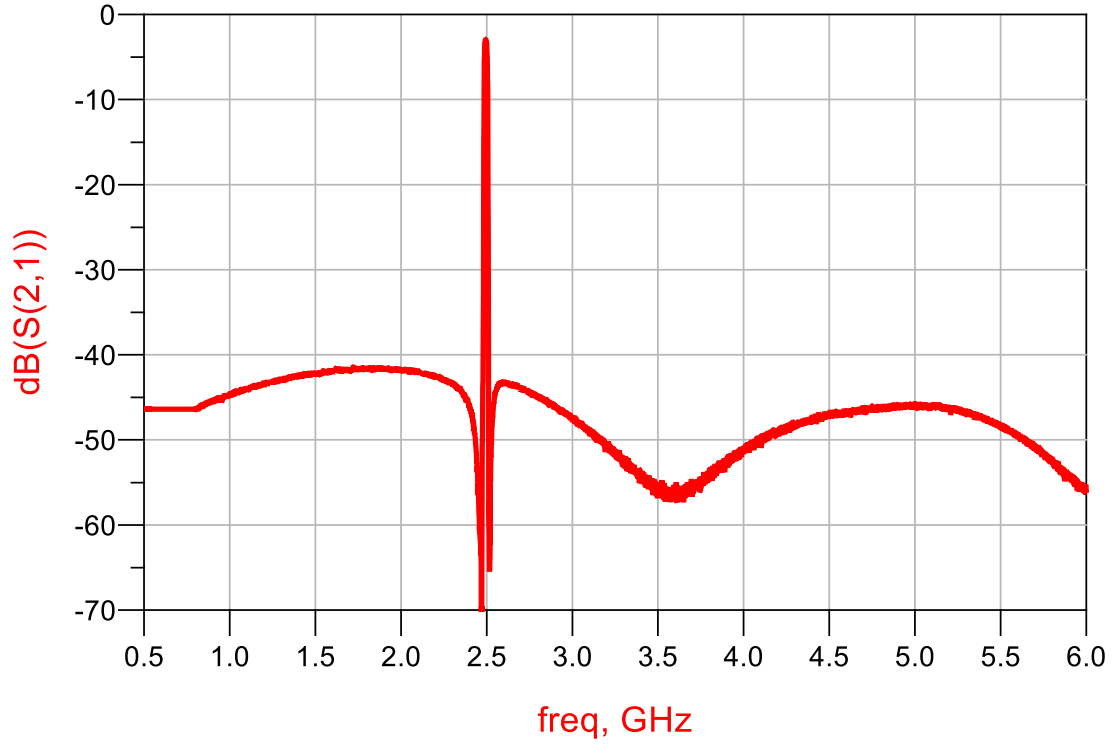
## Electrical Specifications, $Z_0=50\Omega$ , $T_{SPEC}=-55^{\circ}\text{C} \sim +85^{\circ}\text{C}$

---

Parameter		Min. For $T_{SPEC}$	Typ. @+25°C	Max. For $T_{SPEC}$	Unit
Center Frequency		\	2492	\	MHz
Insertion Loss(2488 ~ 2496 MHz)		\	4.0	4.8	dB
Ripple(2488 ~ 2496 MHz)		\	1.1	2.3	dB
Return Loss(2488 ~ 2496 MHz)		10	13	\	dB
Group delay ripple(2488 ~ 2496 MHz)		\	20	50	ns
Attenuation	@2480MHz	20	37	\	dB
	@2515MHz	40	52	\	dB

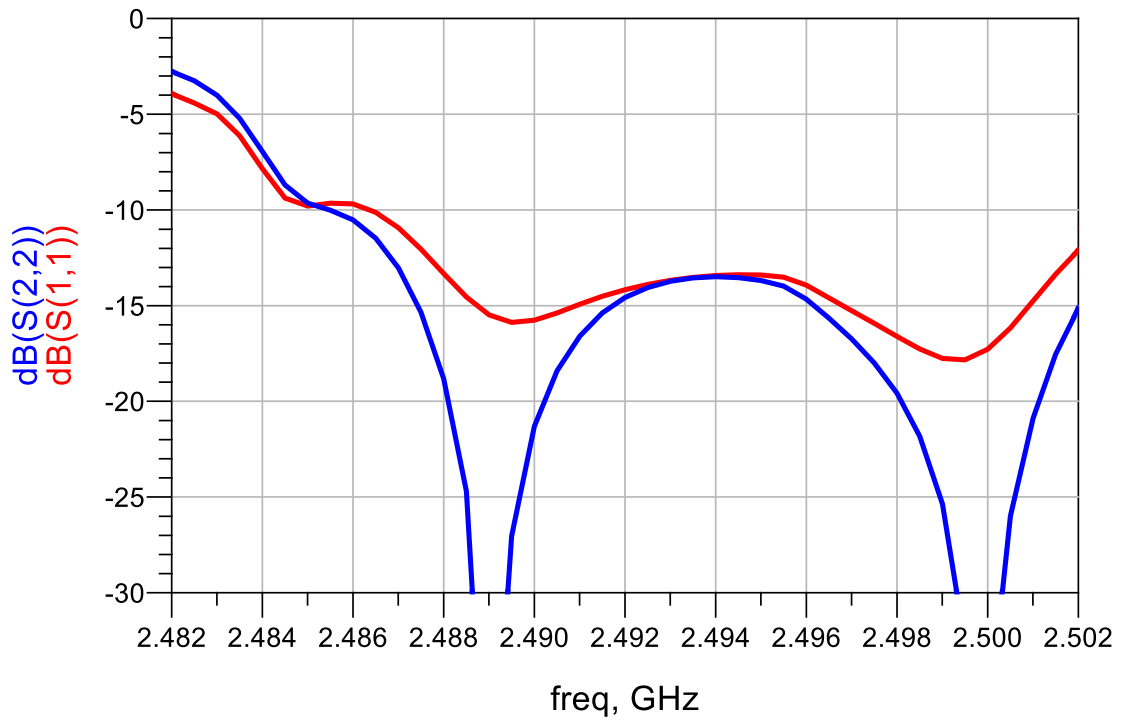
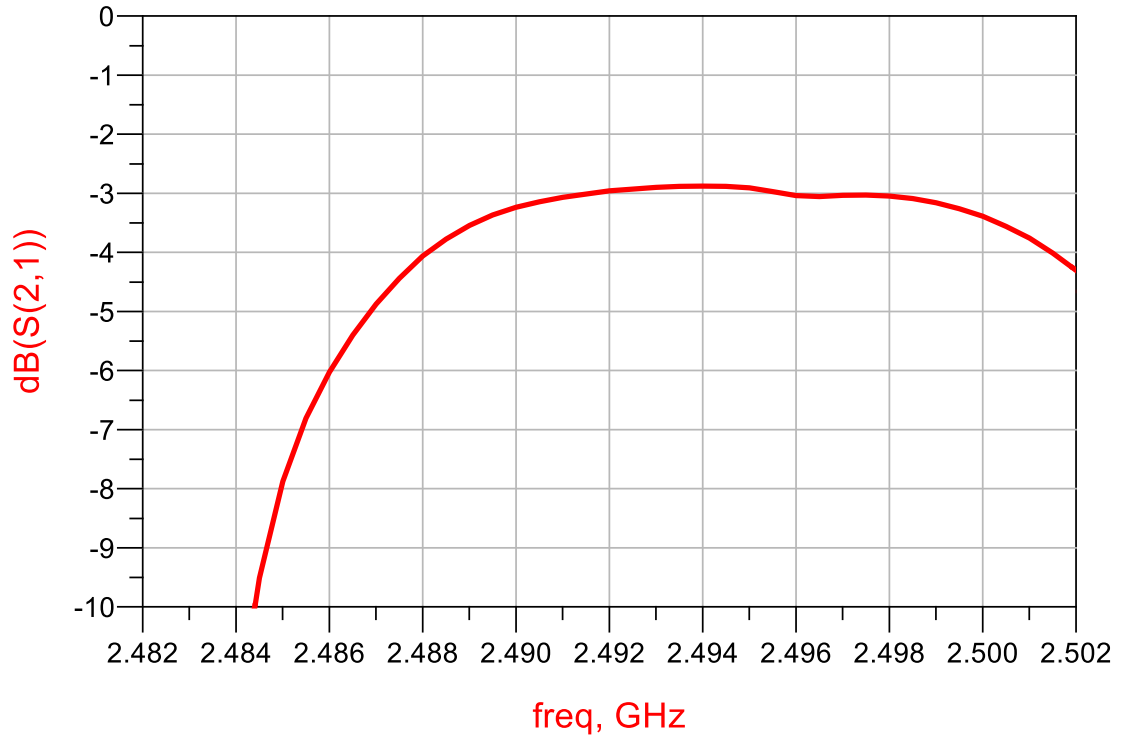
## Typical Performance at Tc = 25°C

---



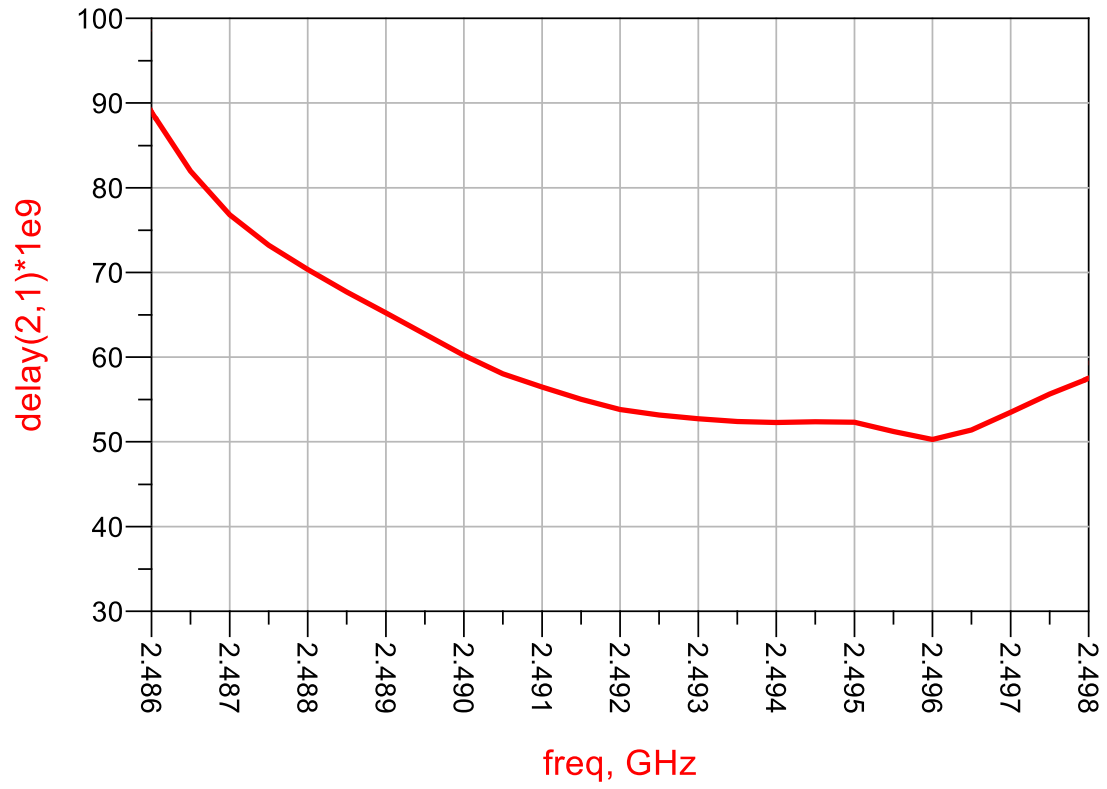
## Typical Performance at Tc = 25°C

---

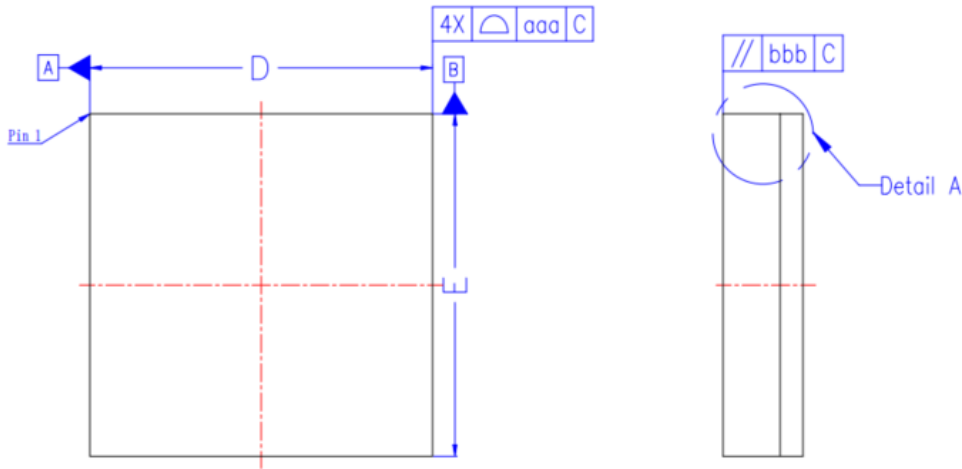


## Typical Performance at Tc = 25°C

---

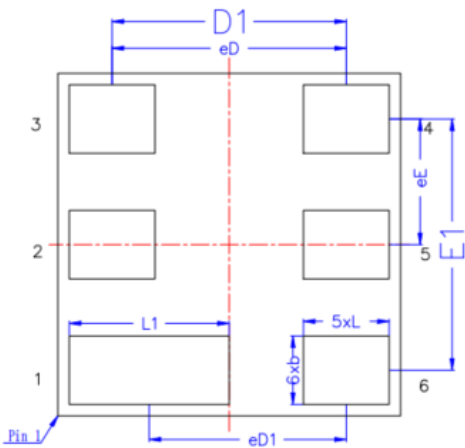


# Outline Drawing package

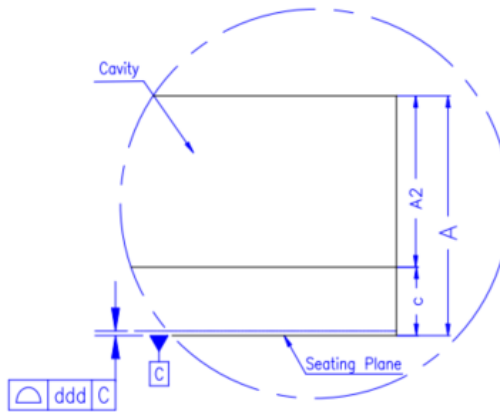


Top View

Side View



Bottom View



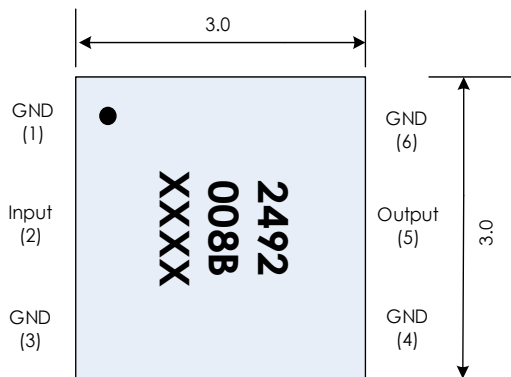
Detail A(3:1)  
Rotate 90°

(Units Of Measure=Millimeter)

Item	Symbol	Common Dimensions			
		MIN.	NOM.	MAX.	
Body Size	X	D	2.950	3.000	3.050
	Y	E	2.950	3.000	3.050
Land Pitch	X	eD	2.050		
		eD1	1.725		
	Y	eE	1.100		
Total Thickness	A	0.650	0.700	0.750	
Mold Cap	A2	0.500REF			
Substrate Thickness	c	0.170	0.200	0.230	
Land Size	b	0.550	0.600	0.650	
		L	0.700	0.750	0.800
	L1	1.350	1.400	1.450	
Package Edge Tolerance	aaa	0.100			
Package Flatness	bbb	0.100			
Coplanarity	ddd	0.100			
Land Count	n	6			
Edge Land center to center	X	D1	2.050		
	Y	E1	2.200		

Note:

1. Ban to use the Level1 environment-related Substrate of HX prescribing.
2. Terminal positions designation PRE JESD 95.



TOP VIEW

## Tape and Reel information

產品尺寸規格   (UNIT:mm)									
規格	W	P1	E	F	D0	D1	P0	P2	10P0
尺寸	12.0 <sup>+0.3</sup> / <sub>-0.3</sub>	8.00±0.1	1.75±0.1	5.5±0.05	1.50±0.1	1.55±0.15	4±0.1	2±0.05	40±0.2
規格	A0	A1	B0	B1	K0	K1	T		
尺寸	3.20±0.05		3.20±0.05		1.10±0.05		0.25±0.05		

